

CMS Monthly News

June 2025



Although it hasn't always felt like it, spring is moving right along and we are excited to begin our summer activities!

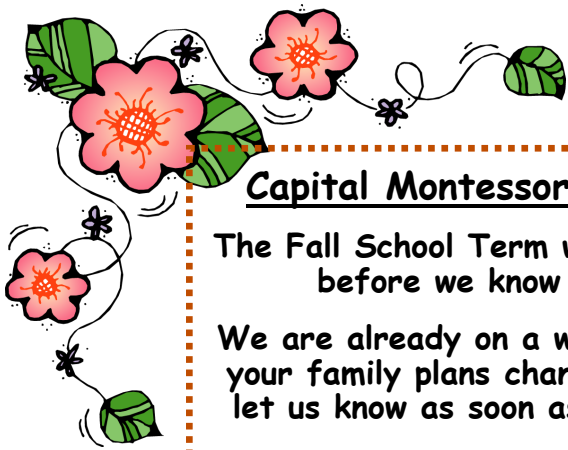
This month brings a family trip to Pacific Beach as well as one of the students' favorites, the "Egg Drop". We are also looking forward to our "End of The Year Party" and our annual "CMS Graduation Ceremonies".

We will celebrate our accomplishments at Graduation and we will enjoy some "tropical" fun as we bring our school year to a close.

Keep your calendars handy because you won't want to miss a thing!

Table of Contents

Information about Monthly Events	Pages 2-3
Pacific Beach Information	Page 4
Egg Drop Information	Page 5
Classroom Information	Pages 6-7
Class Calendar	Page 8



Capital Montessori School

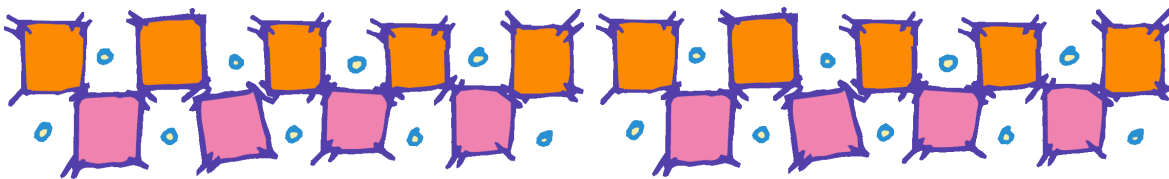
The Fall School Term will be here before we know it...

We are already on a waitlist. If your family plans change, please let us know as soon as you can.

Thanks for allowing us the opportunity to serve your family.

Special Reminder!

All students need to wear pants or shorts under their skirts. No sandals or flip flops - Thanks!



Class Parties

CH/G Friday, June 27th
Party Theme: Berry Great!
End of the Year

CH/B Friday, June 27th
Party Theme: A Berry Good Year!

El Friday, June 27th
Party Theme: Summer Send Off!

To celebrate the end of another great school year, all of the classes will have a special party for the teachers and students!

Each class will have a party theme listed
All CH Students should bring their regular lunches.

Elementary Students will have a pizza option and should bring a side dish to share potluck style. Look for additional information in your Parent Information Folder.

Thanks so much!
The CMS Staff



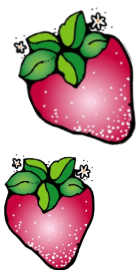
Jump Into Summer Camp!

Begins: Monday, July 7th!!!

Don't forget to sign up if you haven't yet, and let the office know specifically which weeks you will attend.

Also, if your plans have changed - Thanks!

Let the Summer Fun begin!



All School Trip Pacific Beach

Saturday, June 7th

All of our families are invited to join us for this fun day at Pacific Beach.

They have a wonderful State Park with a sandy beach and a creek to play in.

Some families will come for the weekend and some just for the day.

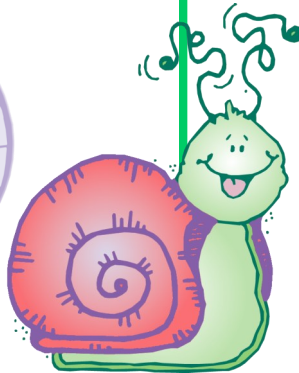
Please refer to page 4 of this newsletter for tips and suggestions on how to enjoy this day to its fullest!



Staff Professional Day

Friday, June 14th

School Closed



All School Egg Drop Thursday, June 12th

All students are invited to participate in this fun event.

All participants will receive certificates and trophies!

Please review the information on page 5 of this packet for all the details so you can start making your egg containers!



Term Break June 30th-July 4th **School Closed**

All School Graduation Sunday, June 22nd

CH/B: Mrs. Reed's Class: 10:00-11:00am

CH/G Mrs. Johnson's Class: 11:30-12:30n

EL/Middle School: Mrs. White/Noble: 11:30-12:30n

The Capital Montessori School will be holding its annual graduation ceremonies on Sunday, June 22nd. Please refer to the above information and/or your class calendar for your student's specific time. Students will be receiving their end of the year materials, certificate and medal. A family photo booth will be available following the ceremonies. This is an important event that you won't want to miss. There will also be a multi-media presentation commemorating the year.

This is considered to be a formal event, so students are encouraged to wear their nicest attire. Feel free to invite friends and relatives, as there should be plenty of space for all.

Our graduation ceremonies will take place in the gymnasium at **The South Bay Elementary School**. Driving directions will be available at the school office or online at the school website.

South Bay Elementary
3845 Sleater-Kinney Road NE
Olympia, WA 98506

A Special Thanks!

... to the families who participated in our annual "Family Picnic" at Tumwater Historical Park. We had a great time and we appreciate you all!

...to the brave men and women who serve in our military and keep our families safe!

... to everyone who sent cards and letters for Incredible Kids Day.

All School Pacific Beach Trip

Saturday, June 7, 2025

Dear CMS Parents and Families:

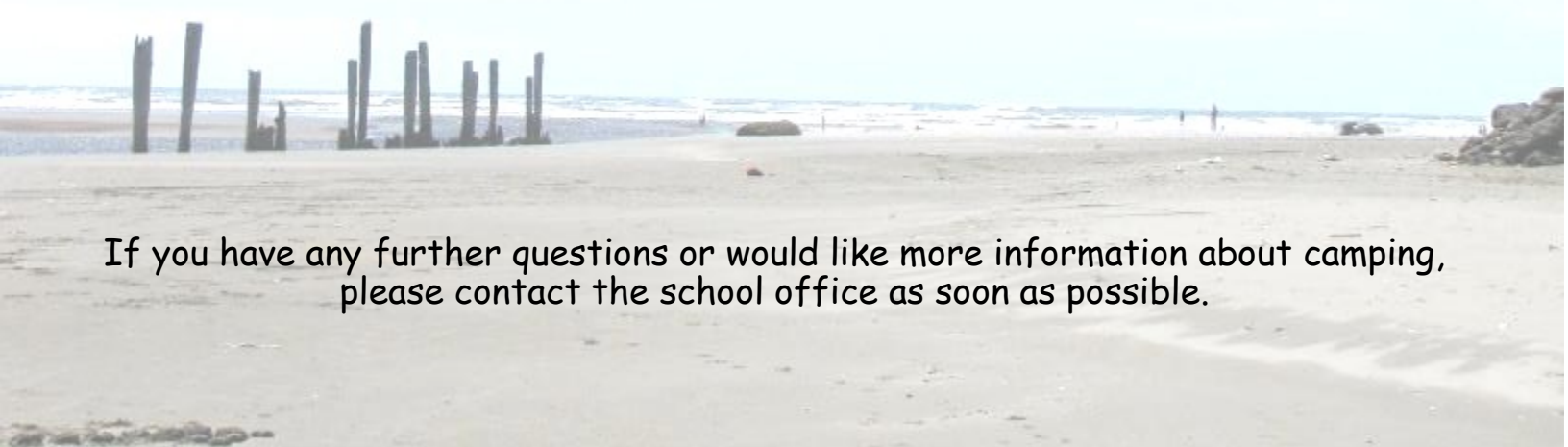
CMS is excited to invite our families to an amazing day at the beach!. Each year our families have made plans to spend an entire fun filled day at Pacific Beach State Park, on the Washington Coast. Please start making your plans to join us. The setting we have chosen is located on a creek and has many fun opportunities for all. This location is safe, family friendly, and bathroom accessible. Look for us near site #31 in the camping area.

Special Information:

Maps will be available at the office. Parking at the State Park requires a Discover Pass or day use permit. Parking is limited. Families are encouraged to carpool if possible.

The Following Are Suggested Items You May Want To Bring:

- | | | |
|----------------------------|--------------------|-------------|
| • Extra Change of Clothing | Jacket/Sweatshirt | Sun Glasses |
| • Hat | Boots/Beach Shoes | Sun Screen |
| • Beach Towel | Beach Toys - Kites | Drinks |
| • Swimming Suit | Extra Plastic Bags | |
| • Silverware | Lawn chairs | |
| • Lots and Lots of Food | | |
| • Beach Umbrella/shelter | | |



If you have any further questions or would like more information about camping, please contact the school office as soon as possible.



Egg Drop Information

Dear CMS Parents and Families:

On Thursday, June 12, 2025 all of the students and staff at the Capital Montessori School will have the opportunity to participate in our annual "All School Egg Drop".

All Egg Drop containers must be submitted to the school by **Wednesday, June 11th**. Each class will have a separate time for their eggs to be thrown from the storage container in the back field.

The schedule is as follows:

Egg Drop Schedule

CH Green	9:30 - 9:50 am
CH Blue	10:00 - 10:20 am
Elementary	10:30 - 10:50 am

A "Participant" certificate and trophy will be awarded to all students who bring an egg container. The egg drop containers will be opened and all unbroken eggs will receive a "Survivor" sticker.

Our students have enjoyed this project over the years and continue to ask for it! If you have any questions, please feel free to check with the school office as soon as possible.

EGG DROP RULES AND REGULATIONS

SUGGESTED MATERIALS YOU CAN USE:

PLEASE - Containers may be no larger than 18"x18"


Styrofoam Peanuts
Baggies
Tissue
Water

Bubble Wrap
Rubber Bands
Dowels/Straws
Nylons

1 Raw Egg

- * The egg cannot be treated in vinegar to alter the composition of the shell.
- * The egg cannot be hard boiled.

*Be Creative!
Have Fun!*



Children's House Green
and
Kindergarten Class

June 2025



HAPPY
BIRTHDAY

Brynn - June 7
Liam - June 15

A Note From Your Teachers.

Hello CMS families!

The end of the year is here, and we are still trying to wrap our minds around how fast it has gone. We have seen so much progress and growth this year, and we are grateful to have been apart of that! We are so unbelievably proud of each and everyone in our class and thankful for all the memories made.

As we wrap up the end of the year we'll be focusing on learning about horses, special places around the world, migration and all about the strawberry plant as we prep for our Berry great end of the year party as well as so much more!



Mrs. Johnson and Ms. Daniel



Bike/Trike day = June 6

Beach trip = June 7

Egg drop entry due = June 11

Egg drop = June 12

Swimsuit sunglasses day = June 13

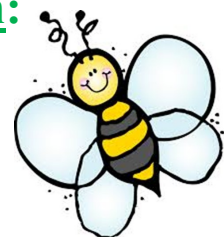
Farmers market = June 18

Berry great party = June 27

Please help our Classroom:

If anyone has any extra magazines, beads or fabric our class would greatly appreciate it.

Our Special Thanks
to You!!!





YUMMY!

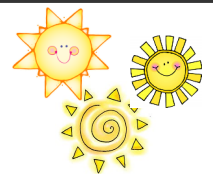
Field Trip



Dirt and Worm Snack

Make at home: chocolate pudding, crushed Oreo, gummy worms

Class Time





Capital Montessori School
Children's House/Kindergarten
Green

June

2025



Sunday	Monday	Tuesday	Wednesday	Thursday	Friday	Saturday
1 sound - pl	2 Special Project Breeds of Horses	3 Science Project Parts of The Horse	4 I See Camouflage Day	5 Special Project Horse Art	6 Bike/Trike Day 	7 All School Pacific Beach Event Saturday/Sunday
8 sound - pr	9 Geography Project Travel The Continents	10 Special Project Architecture of The World Fire Drill	11 Turn in Egg Drop Entries	12 CMS All School Egg Drop	13 Swimsuit and Sunglasses Water Day 	14
15 Father's Day sound - sc	16 Special Project Migration Types	17 Special Project Migration in Washington Earthquake Drill	18 Trip - The Goat Farm 	19 Juneteenth Holiday School Closed	20 Staff Professional Day School Closed First Day of Summer	21
22 Graduation Ceremonies (South Bay Elementary) 	23 Science Project Planting Strawberry Seeds	24 Practical Life Cutting Strawberries	25 Science Project Parts of The Strawberry	26 Special Project Strawberry Art	27 Berry Great! END of Year Last Day of Fall Term	28
29	30 Term Break School Closed June 30 - July 4	1 July School Closed	2 School Closed	3 School Closed	4 School Closed	CMS Summer Camp Road Trip USA National Parks Starts: Monday, July 7th